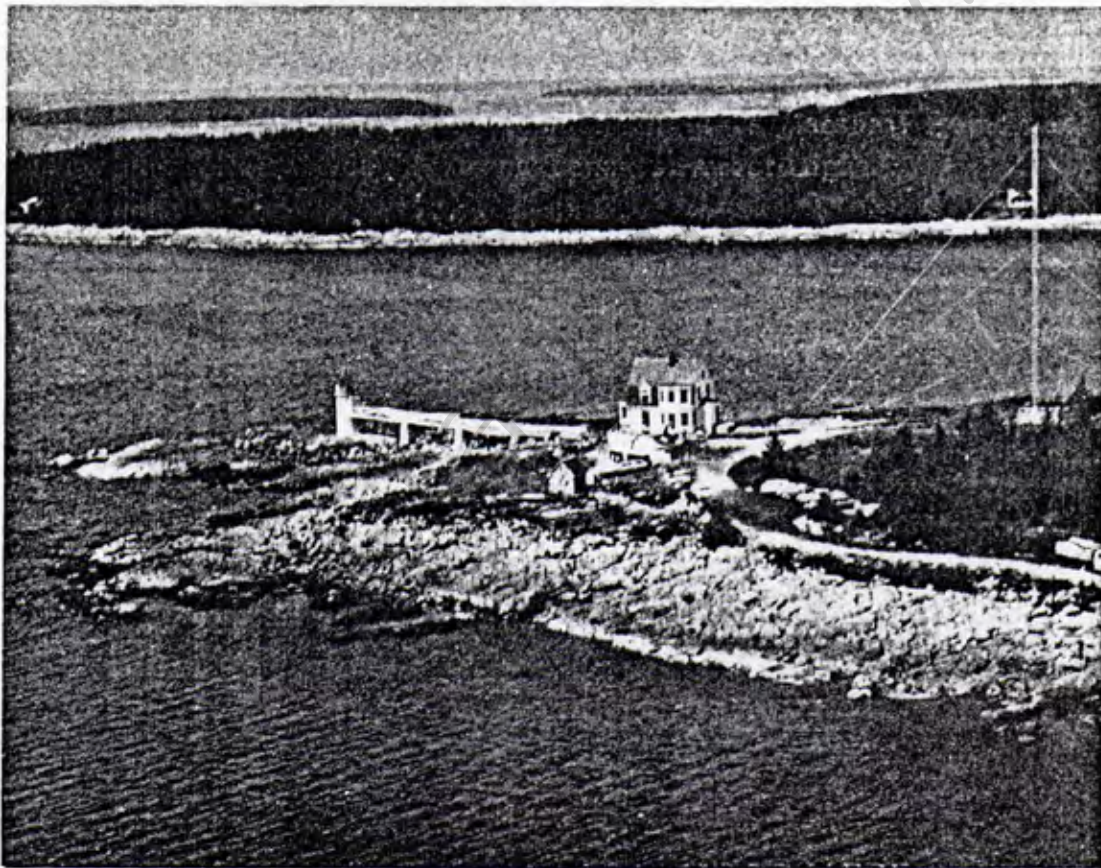




UNITED STATES COAST GUARD LIGHT STATION

MARSHALL POINT PORT CLYDE, MAINE



DEDICATION CEREMONIES

SEPTEMBER 20, 1971

TWO O'CLOCK



REAR ADMIRAL R. W. GOEHRING, USCG

Rear Admiral Robert W. Goehring graduated with a Bachelor of Science from the Coast Guard Academy in 1939 and was commissioned as an ensign. Various floating assignments included the cutters DUANE and OWASCO. He attended Harvard Graduate School of Business from 1949 to 1951 receiving a Masters of Business Administration with distinction. He was then assigned to various administrative duties ashore prior to becoming commanding officer of the CGC CASTLE ROCK. After a tour of duty in Coast Guard Headquarters in Washington, he returned to Boston in 1962 to assume command of the Boston Coast Guard Base and in 1965 was transferred to duties in St. Louis. With promotion to Rear Admiral in July 1967, he returned to Coast Guard Headquarters to become Chief, Office of Operations. On July 1, 1970, RADM Goehring was appointed to the post of Chief of Staff of the Coast Guard and on July 22, 1971 became Commander, First Coast Guard District.

CAPTAIN ROLLIN T. YOUNG, USCG

Captain Rollin T. Young graduated from the Massachusetts Maritime Academy in 1941 and sailed as a licensed engineer with the Merchant Marine during World War II. He was commissioned a Lieutenant(jg) in the Coast Guard in June 1949. His service includes assignments in Boston, Mass., Cleveland, Ohio, Washington, D. C., and Norfolk, Virginia. On January 30, 1969 he became Commander, Coast Guard Group Southwest Harbor.



ETC-B6 DOUGLAS D. ADDY, USCG

Chief Petty Officer Douglas D. Addy entered the U. S. Coast Guard in July 1960. He graduated from the Coast Guard Electronics Technician School in July of 1961, and completed the course of instruction at the RCA Institute in 1968. He has previously served on five loran stations and recently aboard the USCG Cutter WINNEBAGO which served in Vietnam. On December 7, 1970 he was selected as the prospective Officer in Charge of the Marshall Point Loran facility.





Program

MARSHALL POINT LIGHT STATION
PORT CLYDE, MAINE

DEDICATION CEREMONIES
MONDAY, SEPTEMBER 20, 1971

SELECTED MUSIC
U. S. Coast Guard Band

WELCOMING
Captain R. T. Young, USCG
Commander, Southwest Harbor Group

NATIONAL ANTHEM

INVOCATION
Reverend William J. Nelligan
Pastor, St. Bernard's Parish
Rockland, Maine

DEDICATION OF USCG LIGHT STATION
PORT CLYDE, MAINE
Captain R. T. Young, USCG

INTRODUCTIONS
Captain R. T. Young, USCG

REMARKS
Rear Admiral Robert W. Goehring, USCG
Commander, First Coast Guard District

BENEDICTION
Reverend William J. Robbins
Pastor, First Universalist Church
Rockland, Maine

GUESTS ARE INVITED TO INSPECT MARSHALL POINT LIGHT STATION

REFRESHMENTS

MARSHALL POINT LIGHT STATION

Marshall Point Light Station is located on the east side of the south entrance to the fishing village of Port Clyde. It was originally established in 1832 and rebuilt in 1858. The main dwelling was struck by lightning in 1895 and was so severely damaged that it was rebuilt on the existing foundation. The present light is a modern type showing a fixed white light of 7,000 candlepower, is 30 feet above water and is visible for 6 miles. The old fifth order classical fresnel lens is on display at the Marine Exhibit of the Rockland Coast Guard Station. The fog signal is a diaphragm type which sounds a one-second blast every 10 seconds and has a range of one-half mile.

Historian Edward Rowe Snow reported that Marshall Point is in an area explored by the coastal explorer George Weymouth in the early 1600s and that in the early sailing days Marshall Point was known as both Port Clyde Light and Tenants Harbor Light.

PERSONNEL

ETC-B6 DOUGLAS D. ADDY

SAEW RICHARD J. BABCOCK

ET3 JOHN D. LOWREY

ET3 NEIL C. BRYSON

SNEW ROBERT OBORENKO

SNEW JAMES C. GARDNER

EN1 RAYMOND C. WILLIS